

# OSTOMY 101



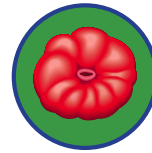
Provided by United Ostomy Associations of America

## WHAT IS AN OSTOMY?



**AN OSTOMY** causes a change in the way urine or stool exits the body as a result of a surgical procedure. Bodily waste is rerouted from its usual path because of malfunctioning parts of the urinary or digestive system. They can be temporary or permanent.

**A STOMA** is the opening created by ostomy surgery. It is located on the abdomen and is dark pink in color. For most ostomies, a pouch is worn over the stoma to collect stool or urine. For some people it is possible to have a continent diversion, which is a procedure that avoids having to wear a pouch, as an alternative to a conventional ostomy.



## WHY DOES A PERSON NEED OR CHOOSE AN OSTOMY?



### COMMON REASONS FOR A **COLOSTOMY**:

- .....
- Diverticulitis causing rupture
- Inflammatory Bowel Disease
- Birth Defects
- Cancers
- Bowel obstruction
- Injury

### COMMON REASONS FOR AN **ILEOSTOMY**:

- .....
- Inflammatory Bowel Disease
- Familial adenomatous polyposis
- Birth Defects
- Cancers

### COMMON REASONS FOR A **UROSTOMY**:

- .....
- Cancer (particularly of the bladder)
- Birth defects
- Bladder diseases or injuries

## OSTOMIES ARE PROSTHETICS



A **colostomy** diverts stool from the colon.



An **ileostomy** diverts stool from the small intestines.



A **urostomy** diverts urine when the bladder has been removed or bypassed.



Persons living with an ostomy in the U.S.

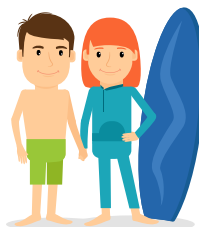
## DID YOU KNOW...?

You'd likely never know if you met a person with an ostomy.

Babies, kids and adults have ostomies.



Approximately **100,000** ostomy surgeries are performed annually in the United States.



People with ostomies live full & meaningful lives that include swimming, working, playing sports & having relationships.

## OSTOMIES SAVE LIVES.

## WHAT ARE THE DIFFERENT TYPES?

**OSTOMY.ORG**  
Advocates for a Positive Change